

# Support Bulletin

Trimble Positioning Services  
OCTOBER 2016  
TAP201607-0041-SuppB

## CONFIGURING SPECTRA PRECISION SP60 FOR NEW FREQUENCY AND BAUD RATE

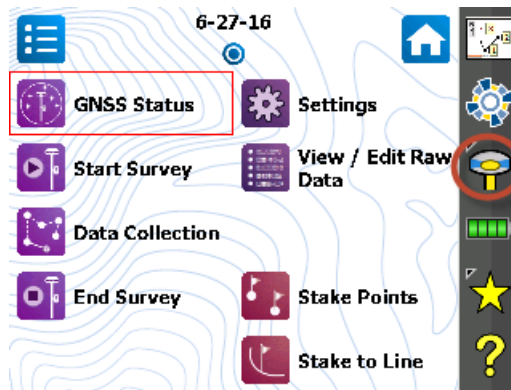
The following instructions will instruct you how to change the frequency and baud on your Spectra Precision SP60. To determine what new frequency and baud rate should be used in your region, please refer to [www.trimble.com/sat](http://www.trimble.com/sat).

### Changing the Frequency and Baud Rate for Trimble RTX on the Spectra Precision SP60

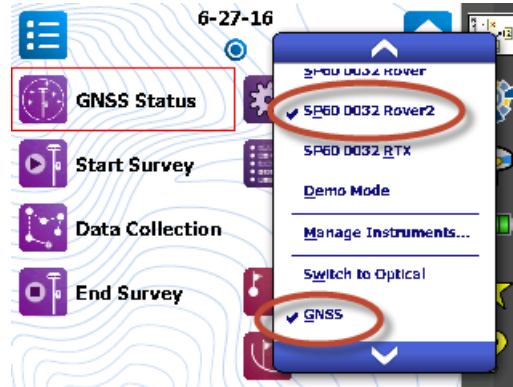
The following set of instructions will instruct you how to change the frequency on your Spectra Precision SP60. You can change the frequency and baud rate for tracking the Trimble RTX™ satellite by using Survey Pro.

#### Changing the frequency and baud rate through the Survey Pro field software

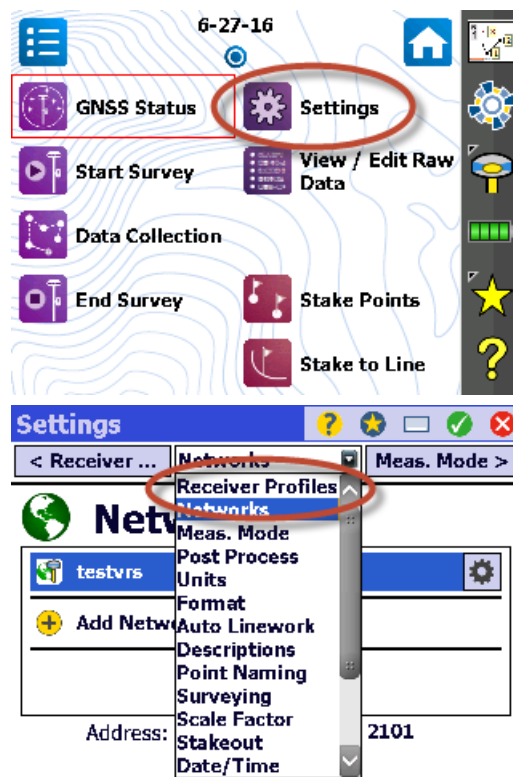
1. Connect to the receiver
  - a. From the **Home** screen, tap the Receiver icon (this icon will be different if not in GNSS mode)



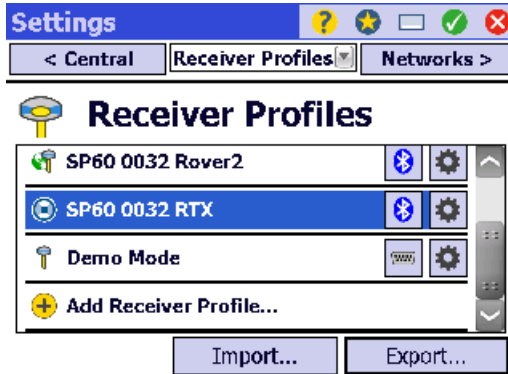
- b. Select the appropriate GNSS Receiver (make sure GNSS is checked, otherwise, tap on Switch to GNSS)



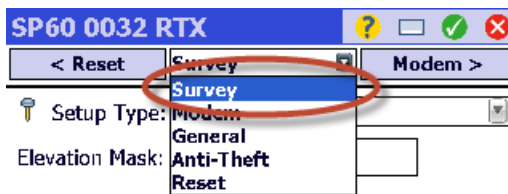
2. Tap **Settings** and navigate to the **Receiver Profiles** screen



3. Tap on the **Settings** icon for the appropriate GNSS Receiver

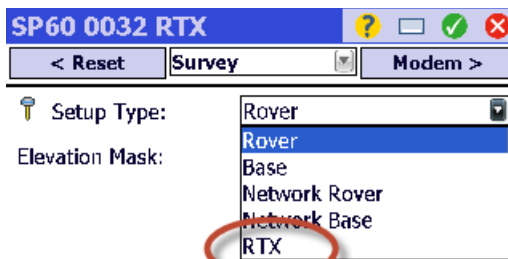


4. Select **Survey** from the top dropdown menu to navigate to the **Survey** screen



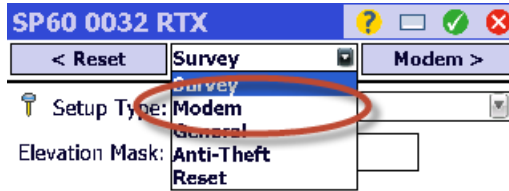
Set to OFF mode

5. Select **RTX** from the **Setup Type** dropdown menu and then tap the green checkmark icon



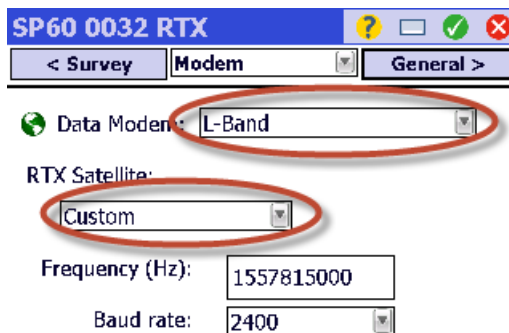
Set to OFF mode

6. Select **Modem** from the top dropdown menu to navigate to the **Modem** screen

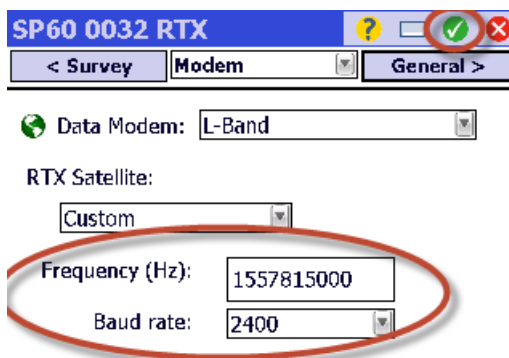


Set to OFF mode

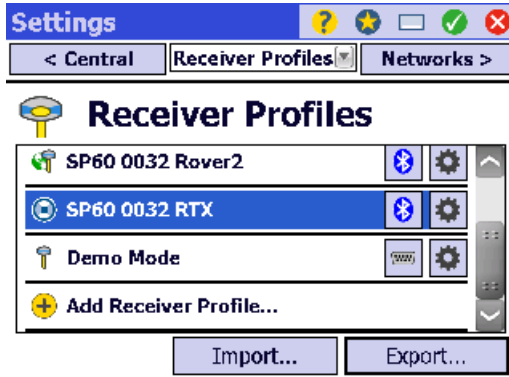
7. Select **L-band** from the **Data Modem** dropdown list and select **Custom** from the **RTX Satellite** dropdown list



8. Enter the new satellites settings for your region
- Enter the new frequency in the **Frequency (Hz)** field (Make sure this is entered in **Hz** units)
  - Enter the new baud rate in the **Baud rate** field
  - Tap the green checkmark icon



9. Tap the green checkmark icon

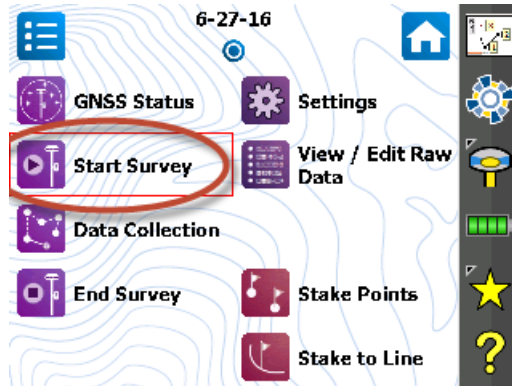


# Verifying Correct Operation for Trimble RTX

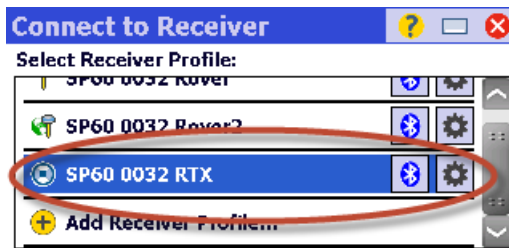
Once you have reconfigured your receiver to the correct new satellite settings for your region, you can confirm that you are receiving the signal by following the steps below.

## Verification through the Survey Pro field software

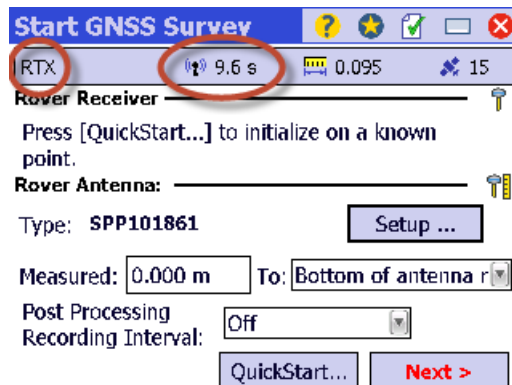
1. Make sure the receiver is outside with a clear and open view of the sky
2. Tap **Start Survey** on the main menu



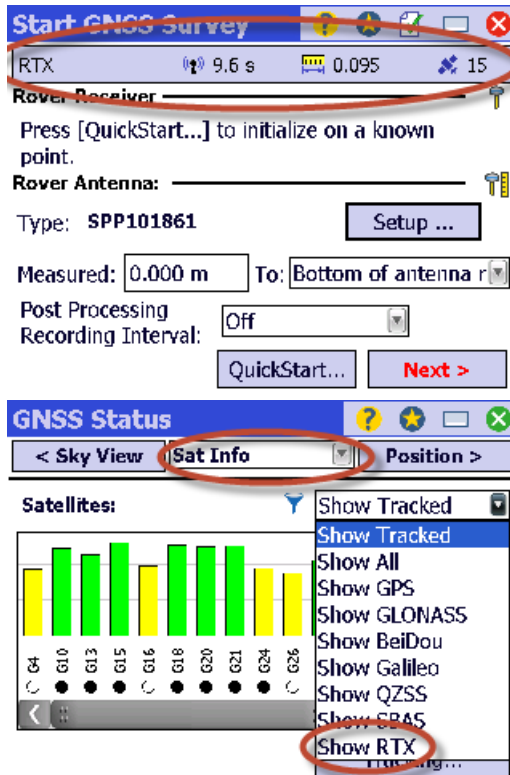
3. Select the **Receiver Profile** setup from earlier, and tap on **Connect**



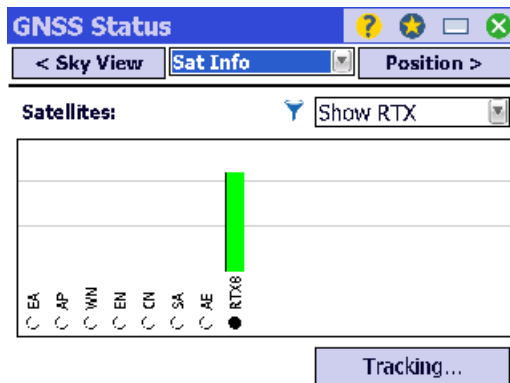
4. The **Solution** type will display **RTX**, and the **Correction Age** should be around 10 seconds



5. Tap the **Status** bar, then navigate to the **Sat Info** page and filter the satellites to **Show RTX**



6. A satellite named **RTX#** (where # will depend on the number of existing RTX satellites) will be displayed with a green bar



## For Additional Assistance

If you need additional assistance, please contact your regional Customer Care team. The most up to date contact information is available on <http://www.trimble.com/Positioning-Services/contact-us.aspx>.

### North, Central & South America and the Caribbean

Phone: +1- 832-538-0210

US Toll Free Phone: +1- 877-407-4743

Brazil Phone: +55 (19) 3113 7099

Email: [am\\_corrections@trimble.com](mailto:am_corrections@trimble.com)

### Australia, South East Asia and India

Australia Toll Free Phone: 1800 062 221

Phone: +61 8 9322 5295

Email: [au\\_corrections@trimble.com](mailto:au_corrections@trimble.com) (Australia)

Email: [asia\\_corrections@trimble.com](mailto:asia_corrections@trimble.com) (South East Asia)

Email: [in\\_corrections@trimble.com](mailto:in_corrections@trimble.com) (India)

### China

Phone: +86 10 8857 7575

Email: [asia\\_corrections@trimble.com](mailto:asia_corrections@trimble.com)

### New Zealand

NZ Toll Free Phone: 0800 888 864

Phone: +64 3 354 9195

Email: [nz\\_corrections@trimble.com](mailto:nz_corrections@trimble.com)

### Europe/CIS & Middle East

Phone: +31 70 3170 900 (Service & Support)

Email: [eu\\_corrections@trimble.com](mailto:eu_corrections@trimble.com) (Europe, Russia & CIS)

### Africa

Phone: +27 21 404 1861

Email: [africa\\_corrections@trimble.com](mailto:africa_corrections@trimble.com)